

A COMPARISON OF THE EFFECTS OF HIGH-P SEQUENCES AND FIXED-TIME
SCHEDULES OF REINFORCEMENT ON THE PROBABILITY OF

COMPLIANCE TO INSTRUCTIONS

Title is in all caps

“A Thesis” *or* “A Project Report,” depending on your department

A Thesis

Make sure to specify if your program is a department, division, or school. This varies by college.

Presented to

The Faculty of the Department of Psychology

Make sure you use the correct and complete department name

California State University, Los Angeles

Font size and type should remain consistent throughout document (size 12, common computer font). Entire document is double spaced.

In Partial Fulfillment

of the Requirements for the Degree

Master of Science

This is the name the degree program within your department. **Do not** include specific option or concentration (e.g., ABA, Studio Art, etc.). See quick guide on Format page.

in

Psychology

1.25” margins (right and left)

By

Benjamin Thomas Heimann

This should be last month and year of current term. December 2016 (Fall); May 2017 (Spring); August 2017 (Summer).

May 2017

Name as listed on Cal State LA records.

1” margins (top and bottom)

Include this page with
copyright information,
regardless of whether
or not you have filed
the copyright.

Name is
same as title
page

© 2017

Benjamin Thomas Heimann

ALL RIGHTS RESERVED

Start pagination
here with
lowercase roman
numerals (ii)

ii

The thesis of Alicia Winsome Tycer is approved.

Candidate's name is same as on title page

Stephen Rothman, Committee Chair

José Cruz González

Meredith Greenburg

James A. Hatfield, Department Chair

Suzanne Regan, Department Chair

Names may include honorifics (e.g., Dr.) *or* degrees (e.g., PhD) *or* name by itself. Honor committee's preference, if they have one.

List committee chair first and department chair(s) last. If the department chair is also on the committee, their name should be listed once with both titles listed (e.g., "Department Chair and Committee Member"). Remaining committee members are listed in between, in A-Z order.

California State University, Los Angeles

May 2017

Month and year match title page.

ABSTRACT

A Point Mutation in the p53 Tumor Suppressor Gene in DAOY Cell Line

By

Luis Lopez

(The student begins typing the abstract here, double-spaced, with a half-inch first-line indent. All text in your thesis should align only to the left margin; do not use full justification.)

We recommend an abstract of no longer than 250 words. When possible, avoid using special characters, symbols, “smart” quotation marks. For more info:

<http://www.etdadmin.com/GlobalTemplates/ETDAdmin/AdminHelp/faq.html#ts10>

ACKNOWLEDGMENTS

(The student begins typing the acknowledgments here, double-spaced, half-inch first-line indent. All text in your thesis should align only to the left margin; do not use full justification.)

This page is optional. However, if you have received any kind of funding for your thesis or have received any special permissions, you must include these in an Acknowledgments page.

TABLE OF CONTENTS

Abstract.....	iv
Acknowledgments.....	v
List of Tables	vii
List of Figures.....	viii
 Chapter	
1. Introduction.....	1
Purpose of the Project.....	3
Definition of Terms.....	5
Scope/Delimitations.....	7
Significance of the Project.....	7
2. Review of Literature	9
CAI Drill-and-Practice in Schools.....	10
Computer Games and Reasoning Skills.....	13
Rewards and Learning	14
3. Procedure	15
4. Evaluation/Conclusion.....	20
References.....	23
 Appendices	
A. Storyboards	25
B. Evaluation.....	103
C. Instructions	111

Take note of how each line is indented, especially differently levels of headings.

A single Appendix would say "Appendix" followed by colon, the title, and page number on the same

Be sure to check all numbers and titles against the rest of

“Table” is listed only once at the top.

LIST OF TABLES

Table

1. Carrying Capacities (K) and Environmental Variations (SD) for Long-term Coexistence Sites	21
2. Demographic Data for <i>Sciurus griseus</i>	22
3. Habitats that Tested the Presence/Absence HSM	29
4. Habitats Predicted	30
5. Univariate Regression Results of Habitat Variables with Relative Abundance of <i>Sciurus griseus</i>	33
6. HSM Model and Equation Created to Describe the Relationship between <i>S. griseus</i> Relative Abundance and Three Selected Habitat Variables	37
7. Probabilities of Extinction Risk and Predicted Persistence Times for <i>Sciurus griseus</i> in Six Long-term Coexistence Sites before and after the Arrival of <i>Sciurus niger</i> into the Site	42

Version 1; can be used for tables, figures, photographs — just about any list. Apply to all lists.

“Figure” is listed on each line.

LIST OF FIGURES

Version 2; can be used for tables, figures, photographs — just about any list. Apply to all lists.

Figure 1. Map of sites tested using the presence/ absence Habitat Suitability Model (HSM)	14
Figure 2. Long-term coexistence study sites within Los Angeles County, CA	17
Figure 3. Western gray squirrel and eastern fox squirrel three-month moving average census numbers at Rancho Santa Ana Botanical Garden (RSABG) from October 2009 to February 2013	32
Figure 4. Observations of <i>S. griseus</i> relative to <i>S. niger</i> as a function of <i>Quercus</i> spp. in a habitat fragment	34
Figure 5. Observations of <i>S. griseus</i> relative to <i>S. niger</i> as a function of conifers in a habitat fragment	34
Figure 6. Observations of <i>S. griseus</i> relative to <i>S. niger</i> as a function of trees that are sources of food in a habitat fragment.....	35
Figure 7. Observations of <i>S. griseus</i> relative to <i>S. niger</i> as a function of the Shannon-Wiener Index for tree diversity in a habitat fragment.....	35
Figure 8. The mean persistence time of <i>S. griseus</i> in the six actual long-term coexistence habitats modeled with the Vortex software	39
Figure 9. <i>Sciurus griseus</i> population sizes over 100 years for each long-term coexistence site before <i>S. niger</i> introduction into the habitat.....	40
Figure 10. <i>Sciurus griseus</i> population modeled for 100 years at the long-term coexistence sites after <i>S. niger</i> introduction into the sites.....	41
Figure 11. Extinction risks for <i>S. griseus</i> at RSABG before and after <i>S. niger</i> arrival simulated over 100 years	43

LIST OF TERMS

EAC	Equal Area Criterion
SMIB	Single Machine Infinite Bus
PSCAD™	A simulation tool from Manitoba HVDC Research Centre
OOS	Out-Of-Step
OST	Out-of-Step Tripping
OSB	Out-of-Step Blocking
IEEE	Institute of Electrical and Electronics Engineers
PU	Per-Unit
PMU	Phasor Measurement Unit

This page is optional.

Apply this style to all chapter headings and titles. No bold or underline.

CHAPTER 1

No running head.

Title of Chapter

Start paragraph here, double spaced, align text left, with a 0.5-inch first-line indent. Align text only to the left margin; do not use full justification. Consult your style guide for additional information about headings, tables, and figures.

Level 1 APA-Style Heading

Start paragraph here. Consult your style guide for additional information about headings, tables, and figures.

Level 2 APA-Style Heading

Start paragraph here. Consult your style guide for additional information about headings, tables, and figures.

Level 3 APA-style heading. Start paragraph here. Consult your style guide for additional information about headings, tables, and figures.

Level 4 APA-style heading. Start paragraph here. Consult your style guide for additional information about headings, tables, and figures.

For headings in other styles see “Quick Guide: Sections, Headings, and Subheadings” (<http://www.calstatela.edu/graduatethesis/format>).

See your style manual for how to format figures, their titles, and captions. This is APA style.

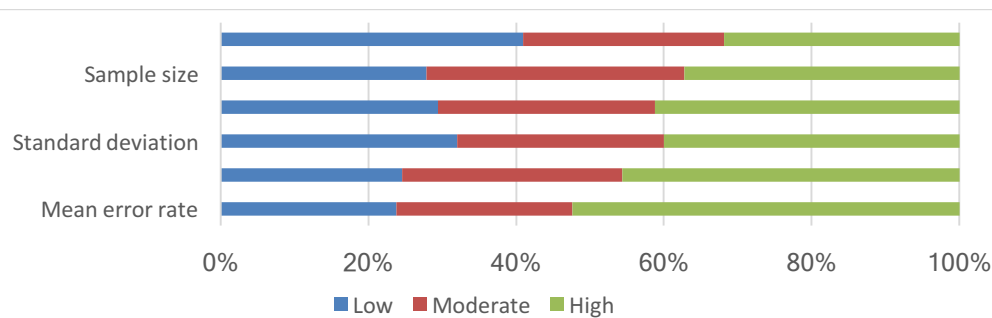


Figure 1. Error rates of older and younger groups.

Arabic numerals start here.

REFERENCES

Start references here, formatted according to your style manual.

Students are encouraged
to use RefWorks to track
and format their
references:
<http://calstatela.libguides.com/refworks>

Continue page
numbers from
previous page. Do
not start over or
change.

APPENDIX A

Title of Appendix

If only one Appendix, do not use letter in page heading.

Table A1

Title of Table

Figures or table numbers in Appendix are always preceded by a letter. If there is only one Appendix, the letter is A. If there is only one item in the Appendix, the title of the item is the title of the Appendix.

Continue page numbers from previous page. Do not start over or change.