

# CMPS 221 – Programming Fundamentals

Jay Manibo

## Where to get Putty

Download from the link below:

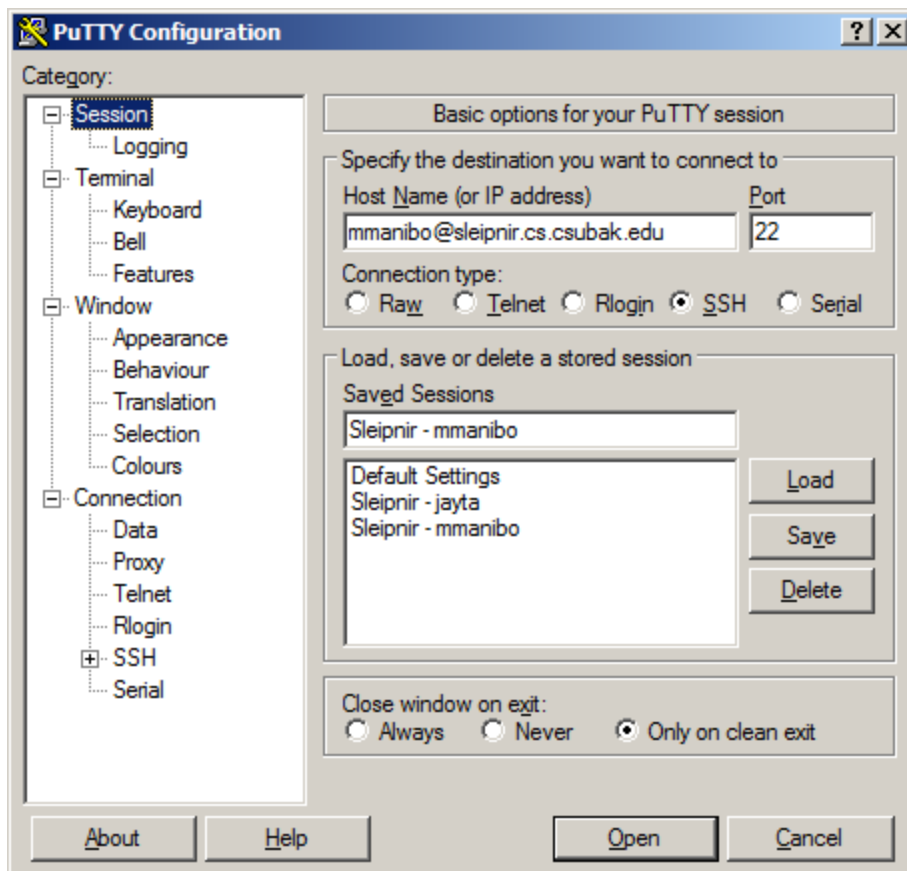
<http://www.chiark.greenend.org.uk/~sgtatham/putty/download.html>

Or directly at:

<http://the.earth.li/~sgtatham/putty/latest/x86/putty.exe>

## Setting Up And Running Putty

Once you have Putty running, fill in the textboxes as below:



- 1) Use your\_own\_username@sleipnir.cs.csubak.edu in the *Host Name* field
- 2) Enter Port 22
- 3) Select SSH as the *Connection Type*
- 4) Enter a descriptive name in the *Saved Sessions* field, then click *Save*
- 5) To log into Sleipnir, double-click your saved session in the list